

## INDEX

Infrastructure and physical facilities for teaching - learning	PAGE NO.
GOOGLE MAP IMAGE OF COLLEGE LOCATION & COLLEGE ENTRANCE	2
SCIENCE AND ARTS BUILDING	3
COLLEGE GARDEN	4
VEHICAL PARKING	4
PRINCIPAL'S CABIN	5
SEMINAR HALL	6
ALL ROOMS MEASUREMENTS (AREA IN SQUARE METER)	7-8
CCTV SERVILENCE	9
COMBINE PHOTOGRAPH OF ICT FACILITIES IN CLASSROOMS, SEMINAR HALL AND LABORATORIES	10

## Google Map Image of College Location



## College Entrance





## Science Building



## Arts Building





## College Garden

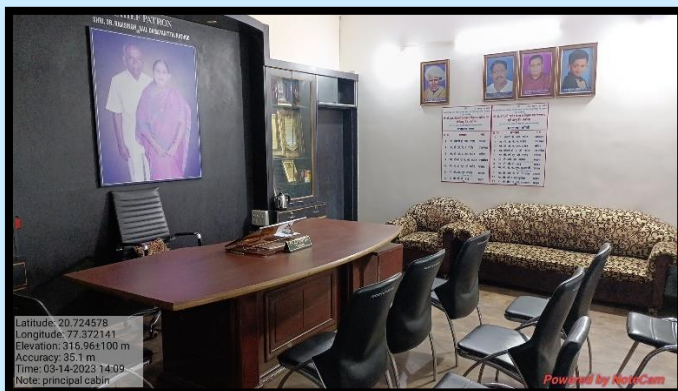


## VEHICAL Parking





## PRINCIPAL'S CABIN



## SEMINAR HALL





# ALL ROOMS MEASUREMENTS (Area in square Ft.)



## Shri. Govindsing Rathod Shikshan Prasarak Mandal, Dahatonda's **Shri. Dr. R. G. Rathod Arts & Science College**

Murtizapur, Dist. Akola, Pin Code 444107 (MS)

(Affiliated By S.G.B. Amravati University, Amravati)

www.rgrcollmzr.ac.in

Ph. No. 07256-243951

Email : artssciencecollege@rediffmail.com

Fax No. 07256-242021

**Smt. D. R. Rathod**  
President

**Dr. A. R. Rathod**  
Secretary

**Dr. A. P. Charjan**  
Principal

Ref. *RGRASC/126/2023-23*

Date *14/03/2023*

### INFRASTRUCTURE MEASUREMENTS

Room No.	Particular	Dimension in Sq. Ft.	Use
1	Room	25×20=500 Sq. ft. (Triangular)	Office
2	Room	25×20=500 Sq. ft.	Principal Cabin
3	Hall (Room No. 2.& 3.)	25 × 60 = 1500 Sq. ft.	Seminar Hall (B.Sc.)
4	Laboratory	25 × 30 = 750 Sq. ft.	Botany
5	Laboratory	25 × 40 = 1000 Sq. ft.	Chemistry
6	Class Room 1	25 × 30 = 750 Sq. ft.	B.Sc.
7	Room	15 × 10 = 150 Sq. ft.	Sport Room
8	Room	14 × 20 = 280 Sq. ft.	YCMOU /Exam Cell
9	Lavatory	15 × 20 = 300 Sq. ft.	Gents Staff
10	Lavatory	5 × 5 = 25 Sq. ft.	Ladies Staff
11	Corridor	6 × 226 = 1356 Sq. ft.	Corridor
11	Room	20 × 25 = 500 Sq. ft.	Mathematics/ Research lab
12	Class Room 4	25 × 30 = 750 Sq. ft.	B.Sc.
13	Laboratory	25 × 30 = 750 Sq. ft.	Zoology
14	Laboratory	25 × 40 = 1000 Sq. ft.	Physics
15	Library	25 × 20 = 500 Sq. ft.	Stack Room
16		14.5 × 10 = 145 Sq. ft.	Circulation Counter
17		14.5 × 20 = 290 Sq. ft.	Student Reading Section
18		14.5 × 10 = 145 Sq. ft.	News Paper Section
19		10 × 10 = 100 Sq. ft.	Staff Reading Section
20		10 × 12 = 120 Sq. ft.	Librarian Cabin



21		25 × 10 = 250 Sq. ft.	Reference Section
22	Laboratory	25×20= 500 Sq. ft.	Computer
23	Room	25×20=500 Sq. ft. (Triangular)	ICT center
24	Room	20 × 10 = 200 Sq. ft.	Department of Geography
25	Room	20 × 10 = 200 Sq. ft.	Botany Research lab
26	Room	10 × 10 = 100 Sq. ft.	Department of NSS
27	Room	20 × 10 = 200 Sq. ft.	Women Cell
28	Room	20 × 20 = 400 Sq. ft.	Girls Common Room
29	Laboratory	20 × 30 = 600 Sq. ft.	Chemistry (PG)/Chemistry Research lab
30	Class Room 5	20 × 30 = 600 Sq. ft.	B.A.
31	Lavatory	10 × 10 = 100 Sq. ft.	Girls
32	Lavatory	10 × 10 = 100 Sq. ft.	Boys
33	Corridor	10 × 110 = 1100 Sq. ft.	Corridor
34	Class Room 6	20 × 22 = 440 Sq. ft.	B.A.
35	Room	20 × 22 = 440 Sq. ft.	Department of Home Economics/ Physics Research lab
36	Class Room 7	20 × 22 = 440 Sq. ft.	B.A.
37	Class Room 8	20 × 20 = 400 Sq. ft.	B.A.
38	Class Room 9	20 × 30 = 600 Sq. ft.	B.A.
39	Room	10 × 8 = 80 Sq. ft.	Department of Language
40	Room	10 × 5 = 50 Sq. ft.	Record Room
41	Corridor	10 × 110 = 1100 Sq. ft.	Corridor
42	Class Room 10	20 × 22 = 440 Sq. ft.	Department of Music
43	Class Room 11	20 × 22 = 440 Sq. ft.	B.A.
44	Class Room 12	20 × 22 = 440 Sq. ft.	B.A.
45	Laboratory	20 × 22 = 440 Sq. ft.	Zoology(PG) / Research lab
46	Class Room 13	20 × 40 = 800 Sq. ft.	M.Sc.
47	Corridor	10 × 120 = 1200 Sq. ft.	Corridor



Principal  
Shri. Dr. R. G. Rathod Arts & Science  
College, Murtizapur, Dist. Akola



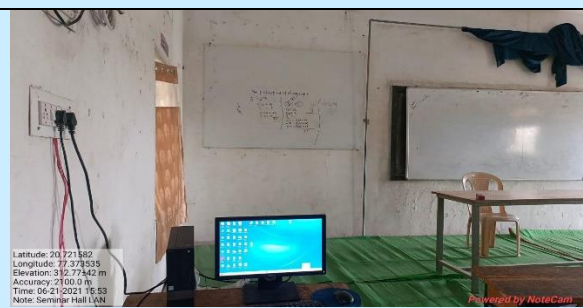
CCTV SERVILENCE



## ICT Facilities in Classrooms, Seminar Hall and Laboratories



**Classroom No. 4 With LAN & PROJECTOR**



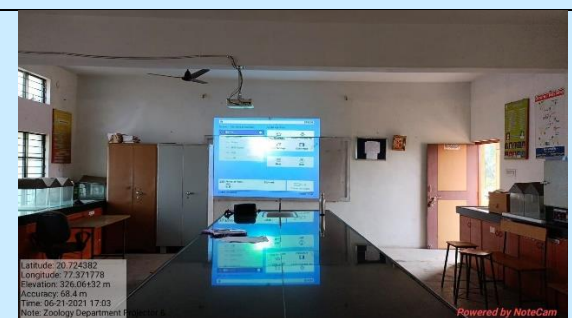
**Seminar Hall (Room No. 2 & 3) With LAN**



**Department of Computer & Lab With LAN**



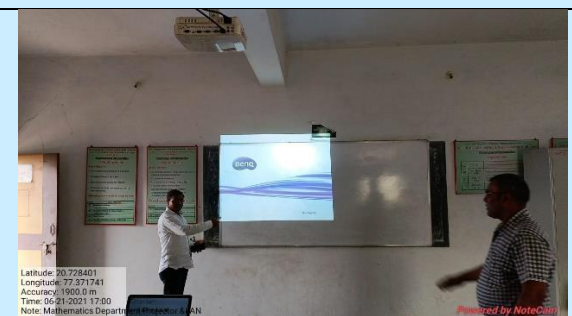
**Department of Physics With LAN & PROJECTOR**



**Department of Zoology With LAN & PROJECTOR**



**Department of Chemistry With LAN & PROJECTOR**



**Department of Mathematics With LAN & PROJECTOR**



**Department of Botany With LAN & PROJECTOR**



**Administrative Office with LAN Facilities**



